

PLAN DE REPERAGE

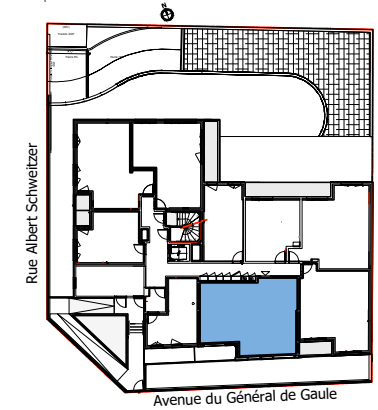
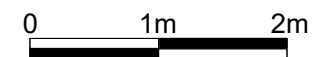


TABLEAU DES SURFACES

RECEPTION	29.30 m ²
CHAMBRE 01	9.40 m ²
CHAMBRE 02	11.60 m ²
SDB	6.90 m ²
SURFACES HABITABLES	57.20 m ²
TERRASSE-BALCON	5.20 m ²
SURFACES TOTALES	62.40 m ²



← Pente du terrain sens d'écoulement des eaux

