

PLAN DE REPERAGE

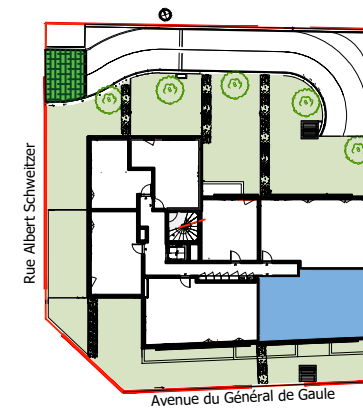
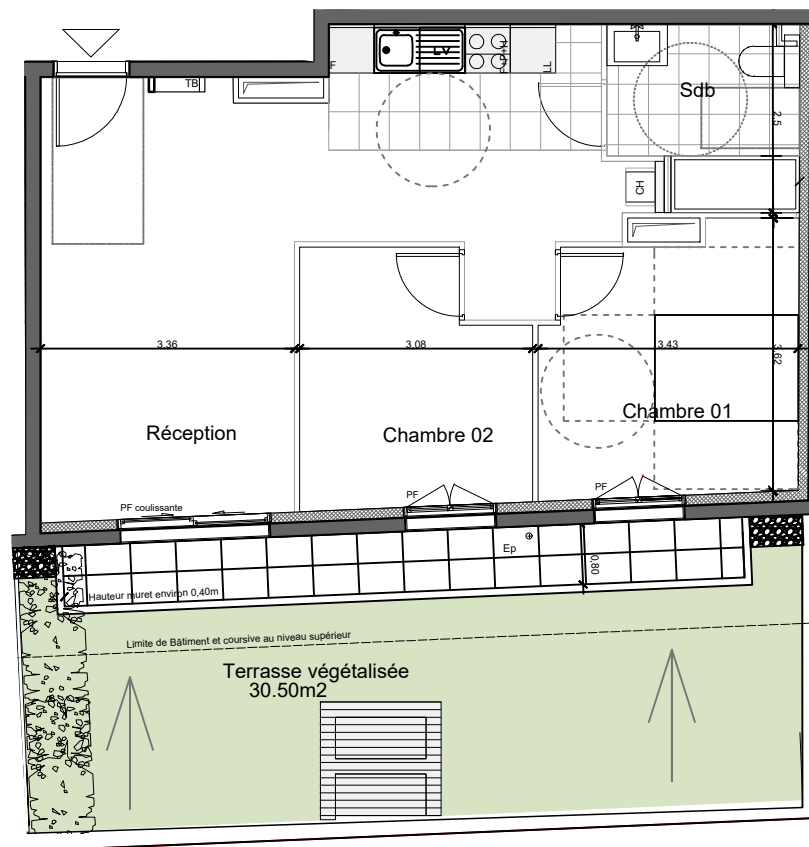


TABLEAU DES SURFACES

RECEPTION	32.40 m ²
CHAMBRE 01	11.50 m ²
CHAMBRE 02	9.60 m ²
SDB	5.70 m ²
SURFACES HABITABLES	59.20 m ²
TERRASSE-BALCON	7.20 m ²
JARDIN PRIVATIF	30.50 m ²
SURFACES EXTERIEURES TOTALES	37,70 m ²



0 1m 2m

← Pente du terrain sens d'écoulement des eaux